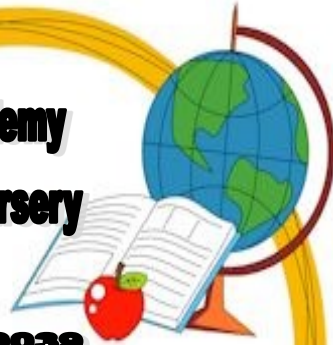




Little Feet Academy Pre-School & Nursery

341-4503
341-0397
341-4503

393-0041 or 393-0039



- ◆ Registration & Lysol Kit - \$55.00
- ◆ Breakfast \$1.50 daily/ \$6.00 weekly
- ◆ Lunch \$ 3.50 daily/ \$15.00 weekly
- ◆ (2) Crib Sheets per week (Monday & Wednesday)
sheets will be sent home on Wednesday and Friday of each week to wash.
- ◆ Toddlers (1) sleep mat and large towel
- ◆ (2) Changes of clothing
- ◆ Wet wipes, powder, lotion, soap, bath towel should be sent in child's bag daily.
- ◆ (2) Fruits, healthy snacks, water, juice etc.
(where applicable)
- ◆ Hot nutritional lunch (microwavable safe container)
- ◆ Thermos with hot water
- ◆ (1) hot bottles made fresh daily (for drop off)
- ◆ Baby formula and cereal (daily)
- ◆ (1) bottle of room temperature drinking water
- ◆ (1) bottle of fruit juice (optional)
- ◆ (5) or more pampers
- ◆ Small and large Ziploc bags for wet towels & soap
- ◆ (2) Metal Spoons
- ◆ (6) Pre -fill bottles with powdered milk/cereal
(we will add the hot water when its time for feeding)

All items should be clearly marked with child's name and given to the caregiver. Little Feet Academy will not be responsible for unmarked items.

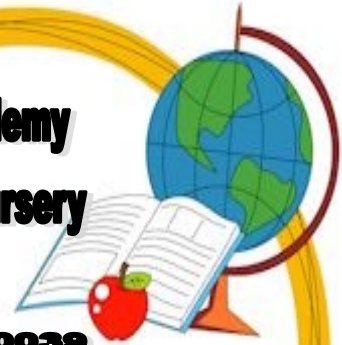
Infant & Toddlers Supply List



Little Feet Academy Pre-School & Nursery

341-4503
341-0397
341-4503

393-0041 or 393-0039



- ◆ Registration & Lysol Kit - \$55.00
- ◆ Breakfast \$1.50 daily/ \$6.00 weekly
- ◆ Lunch \$ 3.50 daily/ \$15.00 weekly
- ◆ (2) Crib Sheets per week (Monday & Wednesday)
sheets will be sent home on Wednesday and Friday of each week to wash.
- ◆ Toddlers (1) sleep mat and large towel
- ◆ (2) Changes of clothing
- ◆ Wet wipes, powder, lotion, soap, bath towel should be sent in child's bag daily.
- ◆ (2) Fruits, healthy snacks, water, juice etc.
(where applicable)
- ◆ Hot nutritional lunch (microwavable safe container)
- ◆ Thermos with hot water
- ◆ (1) hot bottles made fresh daily (for drop off)
- ◆ Baby formula and cereal (daily)
- ◆ (1) bottle of room temperature drinking water
- ◆ (1) bottle of fruit juice (optional)
- ◆ (5) or more pampers
- ◆ Small and large Ziploc bags for wet towels & soap
- ◆ (2) Metal Spoons
- ◆ (6) Pre -fill bottles with powdered milk/cereal
(we will add the hot water when its time for feeding)

All items should be clearly marked with child's name and given to the caregiver. Little Feet Academy will not be responsible for unmarked items.

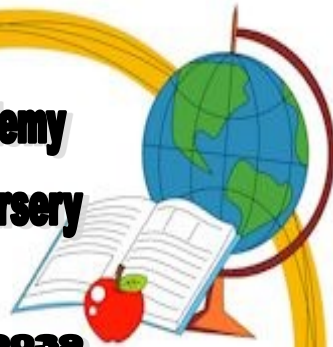
Infant & Toddlers Supply List



Little Feet Academy Pre-School & Nursery

341-4503
341-0397
341-5368

393-0041 or 393-0039



- ◆ Registration, Lysol Kit & P.E. Kit - \$105.00
(P. E. Kit is to be worn daily)
- ◆ Breakfast \$1.50 daily/ \$6.00 weekly
- ◆ Lunch \$ 3.50 daily/ \$15.00 weekly
- ◆ (1) large towel
- ◆ (2) changes of clothing and underwear daily
- ◆ Wet wipes . Powder, lotion, soap, bath towel should be sent in the bag daily. (for bath time)
- ◆ (2) fruits, healthy snacks, water and juice
- ◆ Hot nutritional lunch (microwavable safe container)
- ◆ Spill proof cups/ tumblers
- ◆ (5) or more pull ups (unused pull ups will be sent back home)
- ◆ (1) Pk. Jumbo Crayons
- ◆ (1) Pk. Multi Color Construction Paper
- ◆ (1) 2 pocket folder
- ◆ Large Ziploc bags
- ◆ (2) Metal Spoons
- ◆ (1) 11x14 Legal Size (500 ct)
- ◆ (1) large pack of play dough.
- ◆ (1) School Glue.
- ◆ (1) bag of cotton balls

All items should be clearly marked with child's name and given to the caregiver. Little Feet Academy will not be responsible for unmarked items.

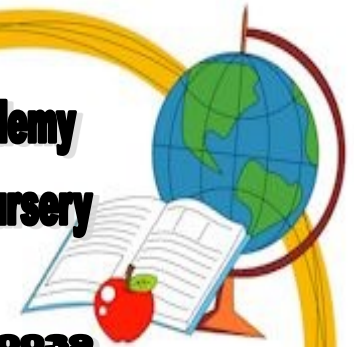
Pre-Kindergarten



Little Feet Academy Pre-School & Nursery

341-4503
341-0397
341-5368

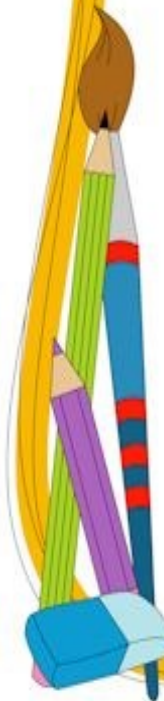
393-0041 or 393-0039



- ◆ Registration, Lysol Kit & P.E. Kit - \$105.00
(P. E. Kit is to be worn daily)
- ◆ Breakfast \$1.50 daily/ \$6.00 weekly
- ◆ Lunch \$ 3.50 daily/ \$15.00 weekly
- ◆ (1) large towel
- ◆ (2) changes of clothing and underwear daily
- ◆ Wet wipes . Powder, lotion, soap, bath towel should be sent in the bag daily. (for bath time)
- ◆ (2) fruits, healthy snacks, water and juice
- ◆ Hot nutritional lunch (microwavable safe container)
- ◆ Spill proof cups/ tumblers
- ◆ (5) or more pull ups (unused pull ups will be sent back home)
- ◆ (1) Pk. Jumbo Crayons
- ◆ (1) Pk. Multi Color Construction Paper
- ◆ (1) 2 pocket folder
- ◆ Large Ziploc bags
- ◆ (2) Metal Spoons
- ◆ (1) 11x14 Legal Size (500 ct)
- ◆ (1) large pack of play dough.
- ◆ (1) School Glue.
- ◆ (1) bag of cotton balls

All items should be clearly marked with child's name and given to the caregiver. Little Feet Academy will not be responsible for unmarked items.

Pre-Kindergarten

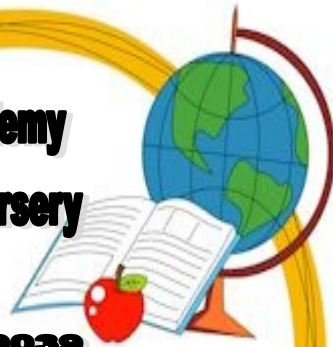




Little Feet Academy Pre-School & Nursery

341-4503
341-0397
341-5368

393-0041 or 393-0039



Registration, Insurance, Book Kit & Sanitation Kit- \$165

- ◆ Breakfast \$1.50 daily/\$6.00 weekly
- ◆ Lunch \$ 3.50 daily /\$15.00 weekly
- ◆ (3) Pull ups (not needed if potty trained)
- ◆ (2) changes of underwear daily.
- ◆ (1) change of clothing or P.E. Kit
- ◆ Bath Towel and Soap in a Ziploc bag
- ◆ (1) Large Towel (Monday & Wednesday)
- ◆ (2) fruits, healthy snacks, water and juice
- ◆ Hot nutritional lunch (microwavable container)
- ◆ (1) Black and White Book
- ◆ (1) Pk. Jumbo Crayons
- ◆ (1) Pk. Multi Colored Paper
- ◆ (1) 2 pocket folder
- ◆ 100 sheet protectors
- ◆ Large Ziploc bags
- ◆ (1) pk.8x11 copy paper (500ct)
- ◆ (2) Metal Spoons
- ◆ (1) school glue
- ◆ (1) large pack play dough
- ◆ (1) pack of cotton balls

All items should be clearly marked with child's name and given to the teacher. Little Feet Academy will not be responsible for unmarked items.

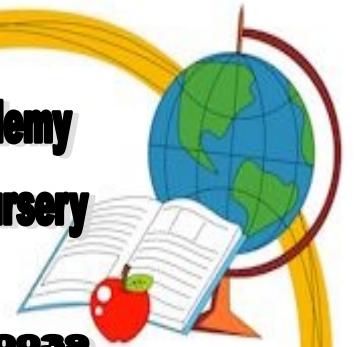
K2 Supply List



Little Feet Academy Pre-School & Nursery

341-4503
341-0397
341-5368

393-0041 or 393-0039

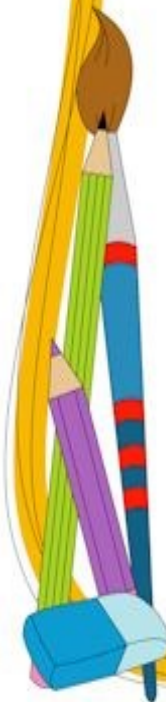


Registration, Insurance, Book Kit & Sanitation Kit- \$165

- ◆ Breakfast \$1.50 daily/\$6.00 weekly
- ◆ Lunch \$ 3.50 daily /\$15.00 weekly
- ◆ (3) Pull ups (not needed if potty trained)
- ◆ (2) changes of underwear daily.
- ◆ (1) change of clothing or P.E. Kit
- ◆ Bath Towel and Soap in a Ziploc bag
- ◆ (1) Large Towel (Monday & Wednesday)
- ◆ (2) fruits, healthy snacks, water and juice
- ◆ Hot nutritional lunch (microwavable container)
- ◆ (1) Black and White Book
- ◆ (1) Pk. Jumbo Crayons
- ◆ (1) Pk. Multi Colored Paper
- ◆ (1) 2 pocket folder
- ◆ 100 sheet protectors
- ◆ Large Ziploc bags
- ◆ (1) pk.8x11 copy paper (500ct)
- ◆ (2) Metal Spoons
- ◆ (1) school glue
- ◆ (1) large pack play dough
- ◆ (1) pack of cotton balls

All items should be clearly marked with child's name and given to the teacher. Little Feet Academy will not be responsible for unmarked items.

K2 Supply List

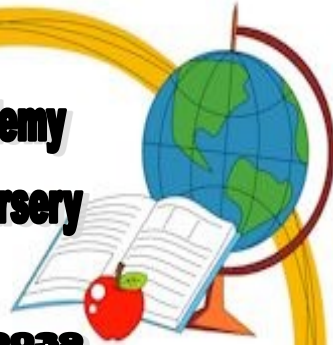




Little Feet Academy Pre-School & Nursery

341-4503
341-0397
341-5368

393-0041 or 393-0039



Registration, Insurance, Book Kit & Sanitation Kit- \$190

- ◆ Breakfast \$1.50 daily/\$6.00 weekly
- ◆ Lunch \$ 3.50 daily/\$15.00 weekly
- ◆ (1) Large Towel (Monday & Wednesday)
- ◆ (1) change of clothing or P.E. Kit
- ◆ Bath Towel and Soap in a Ziploc bag
- ◆ (2) fruits, (2) healthy snacks, water and juice (daily)
- ◆ Hot nutritional lunch (microwavable safe containers)
- ◆ (2) Black and White Book
- ◆ (1) Pk. Jumbo Pencils
- ◆ (1) Pk. Jumbo Crayons
- ◆ (1) Pk. Multi Colored Paper
- ◆ (2) 2 pocket folders
- ◆ 100 sheet protectors
- ◆ (1) Pk. Folder sheets
- ◆ (1) Pk.8x11 copy paper (500ct)
- ◆ (1) 1 1/2" Binder
- ◆ (2) Metal Spoons
- ◆ Large Ziploc Bag
- ◆ (1) school glue
- ◆ (1) bag of cotton balls
- ◆ (1) large pack of play dough

Please ensure that All of your child's items are properly marked with a permanent marker and given to the teacher. Little Feet Academy will not be responsible for unmarked items.

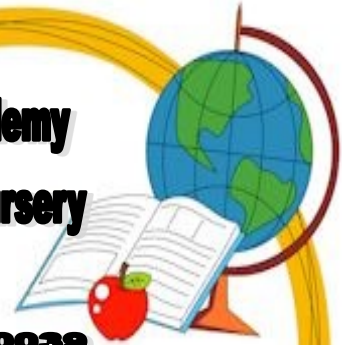
K3 Supply List



Little Feet Academy Pre-School & Nursery

341-4503
341-0397
341-5368

393-0041 or 393-0039



Registration, Insurance, Book Kit & Sanitation Kit- \$190

- ◆ Breakfast \$1.50 daily/\$6.00 weekly
- ◆ Lunch \$ 3.50 daily/\$15.00 weekly
- ◆ (1) Large Towel (Monday & Wednesday)
- ◆ (1) change of clothing or P.E. Kit
- ◆ Bath Towel and Soap in a Ziploc bag
- ◆ (2) fruits, (2) healthy snacks, water and juice (daily)
- ◆ Hot nutritional lunch (microwavable safe containers)
- ◆ (2) Black and White Book
- ◆ (1) Pk. Jumbo Pencils
- ◆ (1) Pk. Jumbo Crayons
- ◆ (1) Pk. Multi Colored Paper
- ◆ (2) 2 pocket folders
- ◆ 100 sheet protectors
- ◆ (1) Pk. Folder sheets
- ◆ (1) Pk.8x11 copy paper (500ct)
- ◆ (1) 1 1/2" Binder
- ◆ (2) Metal Spoons
- ◆ Large Ziploc Bag
- ◆ (1) school glue
- ◆ (1) bag of cotton balls
- ◆ (1) large pack of play dough

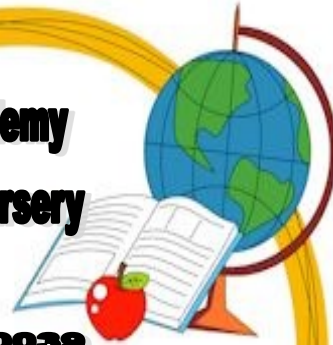
Please ensure that All of your child's items are properly marked with a permanent marker and given to the teacher. Little Feet Academy will not be responsible for unmarked items.

K3 Supply List



Little Feet Academy Pre-School & Nursery

341-4503
341-0397
341-5368
393-0041 or 393-0039



Registration, Insurance, Book Kit, Sanitation Kit & Graduation Fees - \$385.00 included

- ◆ Breakfast \$1.50 daily/\$6.00 weekly
- ◆ Lunch \$ 3.50 daily/\$15.00 weekly
- ◆ (1) Large Towel (Monday & Wednesday)
- ◆ (1) change of clothing or P.E. Kit
- ◆ Bath Towel and Soap in a Ziploc bag
- ◆ (2) fruits, (2) healthy snacks, water and juice (daily) (snacks can be purchased at the school's office)
- ◆ Hot nutritional lunch (microwavable container)
- ◆ (2) Black and White Book
- ◆ (1) Pk. Jumbo Pencils
- ◆ (1) Pk. Jumbo Crayons
- ◆ (1) Pk. Multi Colored Paper
- ◆ (2) 2 pocket folders
- ◆ 100 sheet protectors
- ◆ (1) Pk. Folder sheets
- ◆ (1) Pk.8x11 copy paper (500ct)
- ◆ (1) 1 1/2" Binder
- ◆ (2) Metal Spoons
- ◆ Large Ziploc Bags
- ◆ (1) school glue
- ◆ (1) bag of cotton balls
- ◆ (1) large pack of play dough
- ◆ (1) scissors

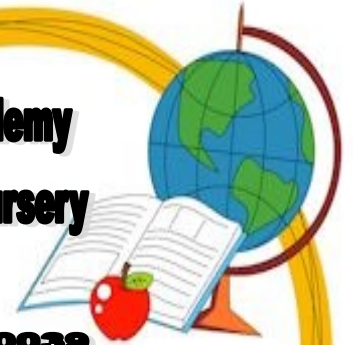
Please ensure that All of your child's items are properly marked with a permeant marker. Little Feet Academy will not be responsible for unmarked items.

K4 Supply List



Little Feet Academy Pre-School & Nursery

341-4503
341-0397
341-5368
393-0041 or 393-0039



Registration, Insurance, Book Kit, Sanitation Kit & Graduation Fees - \$385.00 included

- ◆ Breakfast \$1.50 daily/\$6.00 weekly
- ◆ Lunch \$ 3.50 daily/\$15.00 weekly
- ◆ (1) Large Towel (Monday & Wednesday)
- ◆ (1) change of clothing or P.E. Kit
- ◆ Bath Towel and Soap in a Ziploc bag
- ◆ (2) fruits, (2) healthy snacks, water and juice (daily) (snacks can be purchased at the school's office)
- ◆ Hot nutritional lunch (microwavable container)
- ◆ (2) Black and White Book
- ◆ (1) Pk. Jumbo Pencils
- ◆ (1) Pk. Jumbo Crayons
- ◆ (1) Pk. Multi Colored Paper
- ◆ (2) 2 pocket folders
- ◆ 100 sheet protectors
- ◆ (1) Pk. Folder sheets
- ◆ (1) Pk.8x11 copy paper (500ct)
- ◆ (1) 1 1/2" Binder
- ◆ (2) Metal Spoons
- ◆ Large Ziploc Bags
- ◆ (1) school glue
- ◆ (1) bag of cotton balls
- ◆ (1) large pack of play dough
- ◆ (1) scissors

Please ensure that All of your child's items are properly marked with a permeant marker. Little Feet Academy will not be responsible for unmarked items.

K4 Supply List